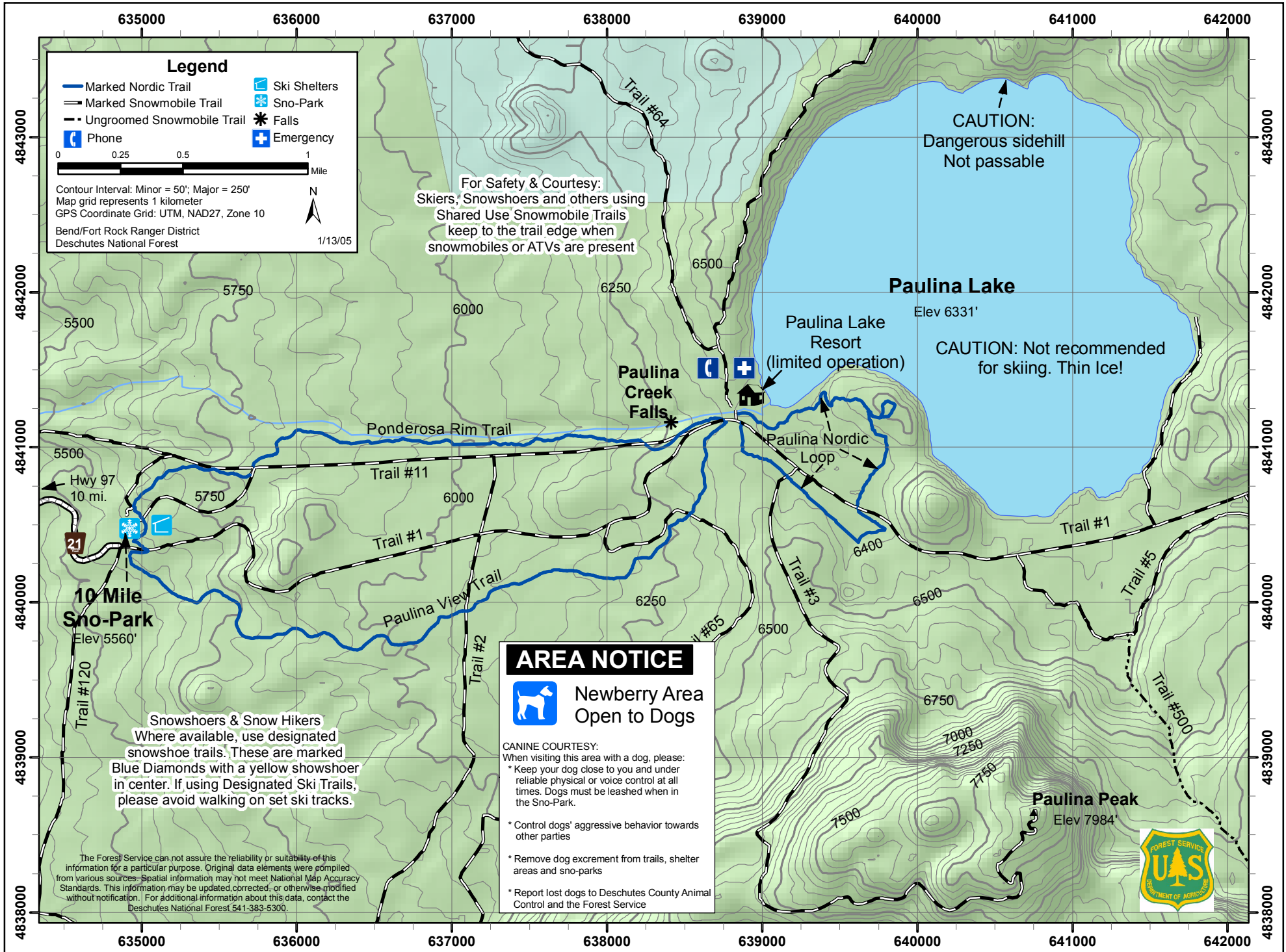
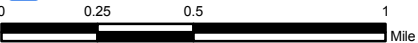


Newberry Crater Area NORDIC SKI TRAILS



Legend

- Marked Nordic Trail
- Marked Snowmobile Trail
- - Ungroomed Snowmobile Trail
- Phone
- Ski Shelters
- Sno-Park
- Falls
- Emergency



Contour Interval: Minor = 50'; Major = 250'
 Map grid represents 1 kilometer
 GPS Coordinate Grid: UTM, NAD27, Zone 10
 Bend/Fort Rock Ranger District
 Deschutes National Forest



1/13/05

For Safety & Courtesy:
 Skiers, Snowshoers and others using
 Shared Use Snowmobile Trails
 keep to the trail edge when
 snowmobiles or ATVs are present

CAUTION:
 Dangerous sidehill
 Not passable

CAUTION: Not recommended
 for skiing. Thin Ice!

AREA NOTICE

**Newberry Area
 Open to Dogs**

- CANINE COURTESY:**
 When visiting this area with a dog, please:
- * Keep your dog close to you and under reliable physical or voice control at all times. Dogs must be leashed when in the Sno-Park.
 - * Control dogs' aggressive behavior towards other parties
 - * Remove dog excrement from trails, shelter areas and sno-parks
 - * Report lost dogs to Deschutes County Animal Control and the Forest Service

Snowshoers & Snow Hikers
 Where available, use designated snowshoe trails. These are marked Blue Diamonds with a yellow snowshoer in center. If using Designated Ski Trails, please avoid walking on set ski tracks.

The Forest Service can not assure the reliability or suitability of this information for a particular purpose. Original data elements were compiled from various sources. Spatial information may not meet National Map Accuracy Standards. This information may be updated, corrected, or otherwise modified without notification. For additional information about this data, contact the Deschutes National Forest 541-383-5300.

