

# OREGON BADLANDS WILDERNESS AREA

WILDERNESS BOUNDARY



BLM BOUNDARY



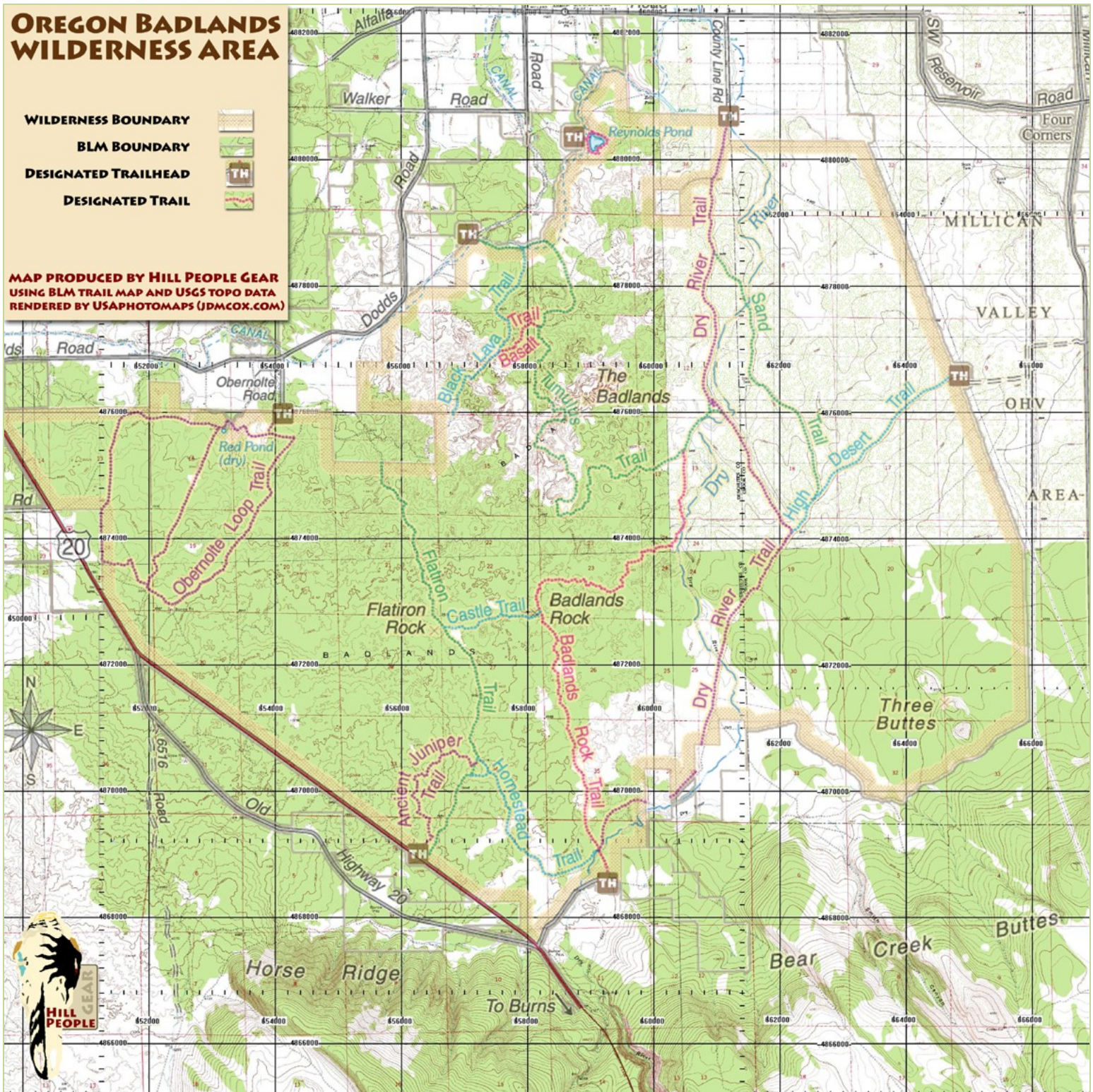
DESIGNATED TRAILHEAD



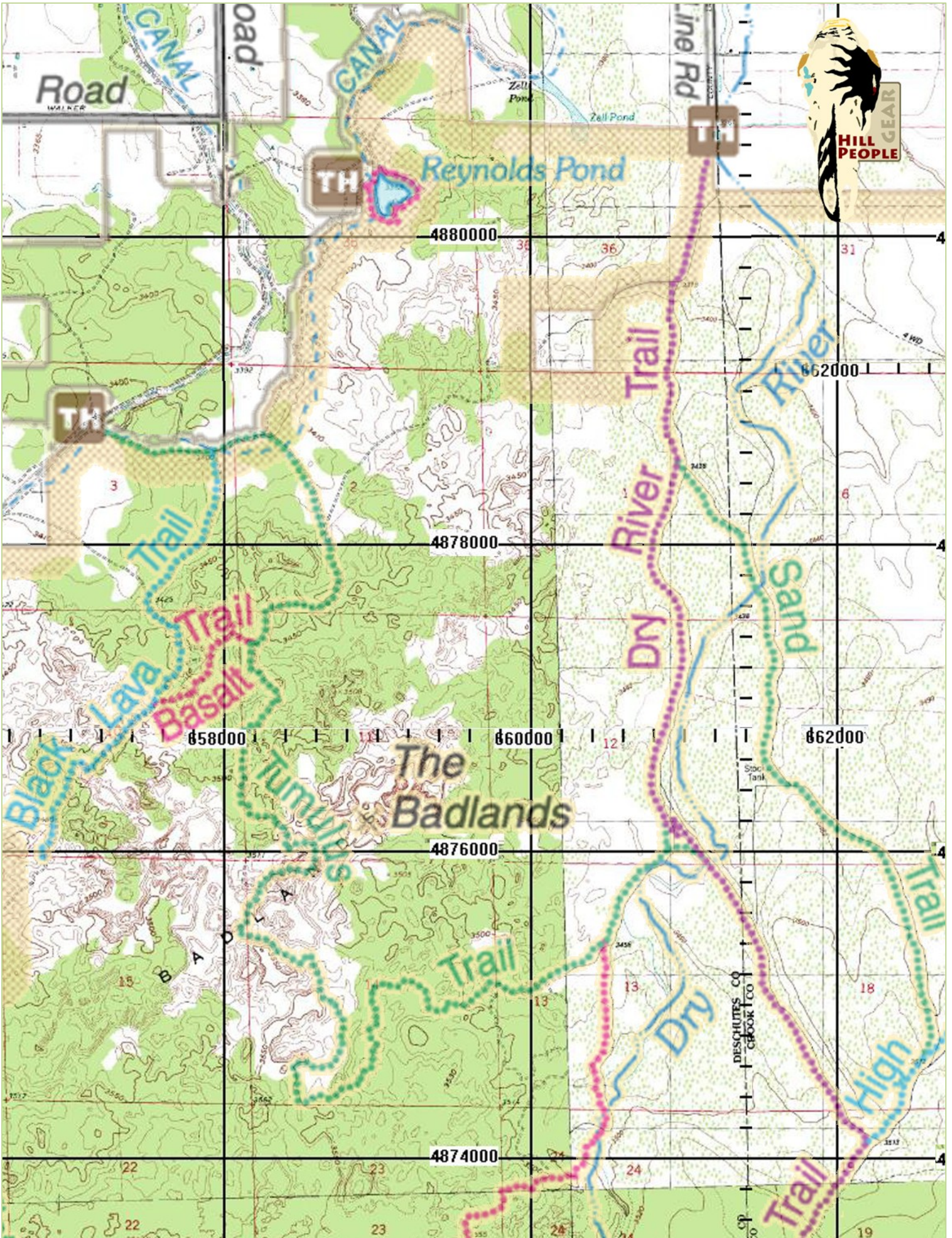
DESIGNATED TRAIL



MAP PRODUCED BY HILL PEOPLE GEAR  
USING BLM TRAIL MAP AND USGS TOPO DATA  
RENDERED BY USAPHOTOMAPS (JDMCOX.COM)



This overview of the Oregon Badlands Wilderness Area is part of a free 4 page series of home printable maps of the area produced by Hill People Gear ([www.HillPeopleGear.com](http://www.HillPeopleGear.com)). It was produced using USGS topo data retrieved using the excellent donation-ware USPhotomaps ([jdmcox.com](http://jdmcox.com)) overlaid with the BLM trail map of the badlands and edited in Photoshop and Word. Page 2 covers the Reynolds Pond area in greater detail, page 3 covers the Obermolte / Chitwood area in greater detail, and page 4 covers the southern area in greater detail. You can print all 4 pages out at home using double sided printing on National Geographic waterproof "Adventure Paper" and end up with a very usable map of the wilderness area on two 8.5x11 sheets.



Road  
WALKER

TH

Reynolds Pond

4880000

Line Rd

E

HILL PEOPLE GEAR

TH

3

4878000

4862000

Black Lava Trail  
Basalt Trail

458000

The Badlands

4876000

Dry River Trail

460000

Sand Trail

462000

Jumilla's Trail

4874000

Dry River Trail

13

DESCHUTES CO  
CROOK CO

18

High Trail

22

22

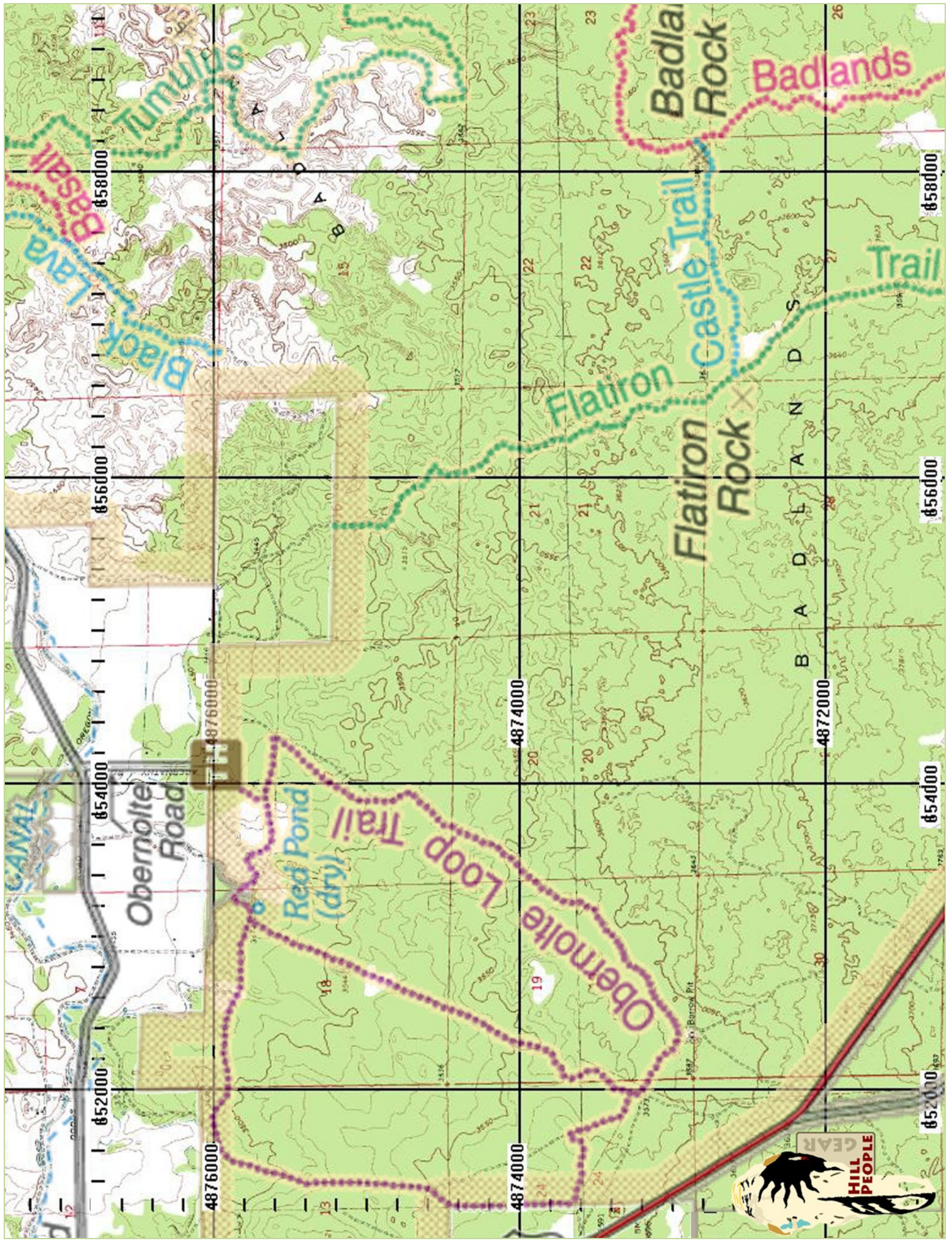
23

23

24

24

19



Obernolte Road

Obernolte Loop Trail

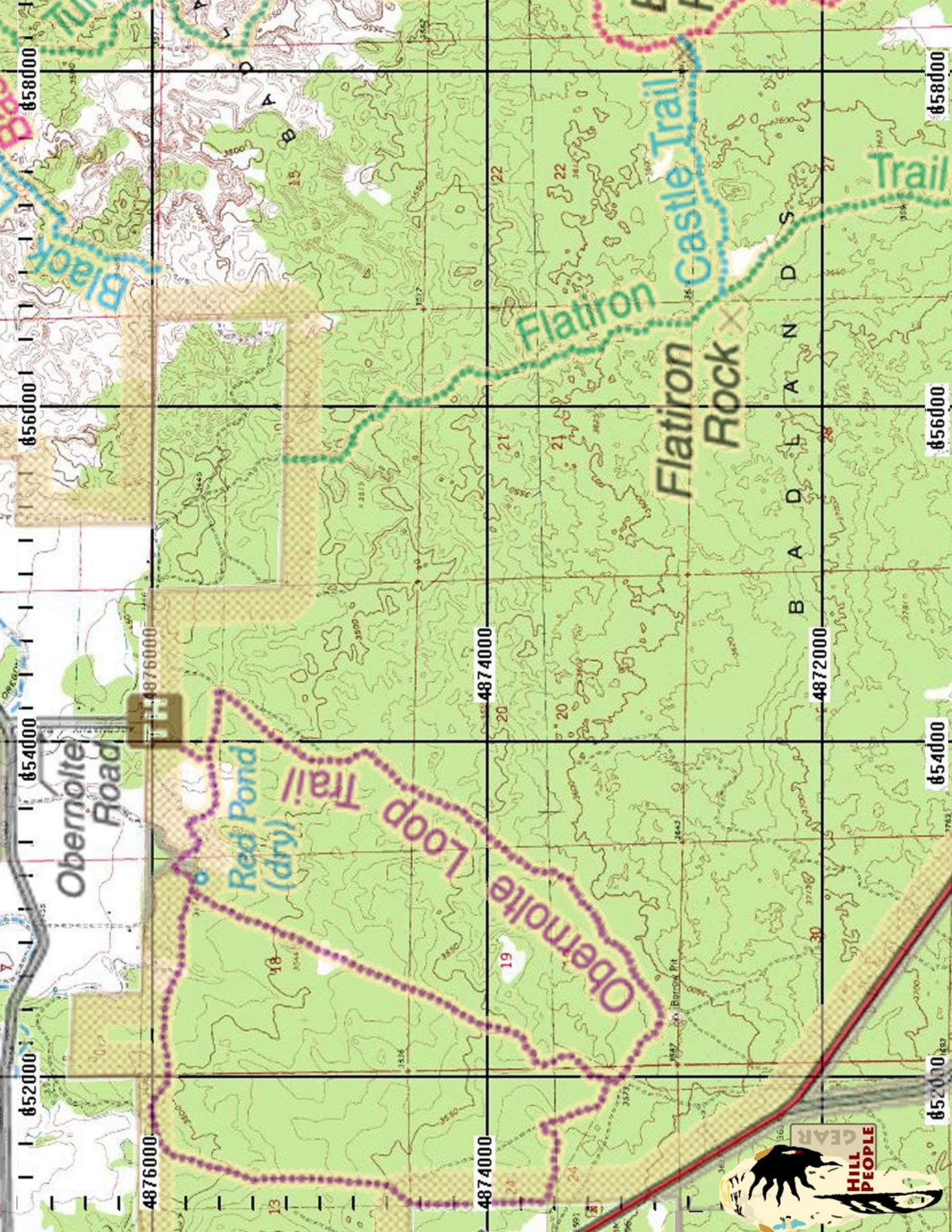
Red Pond (dry) Trail

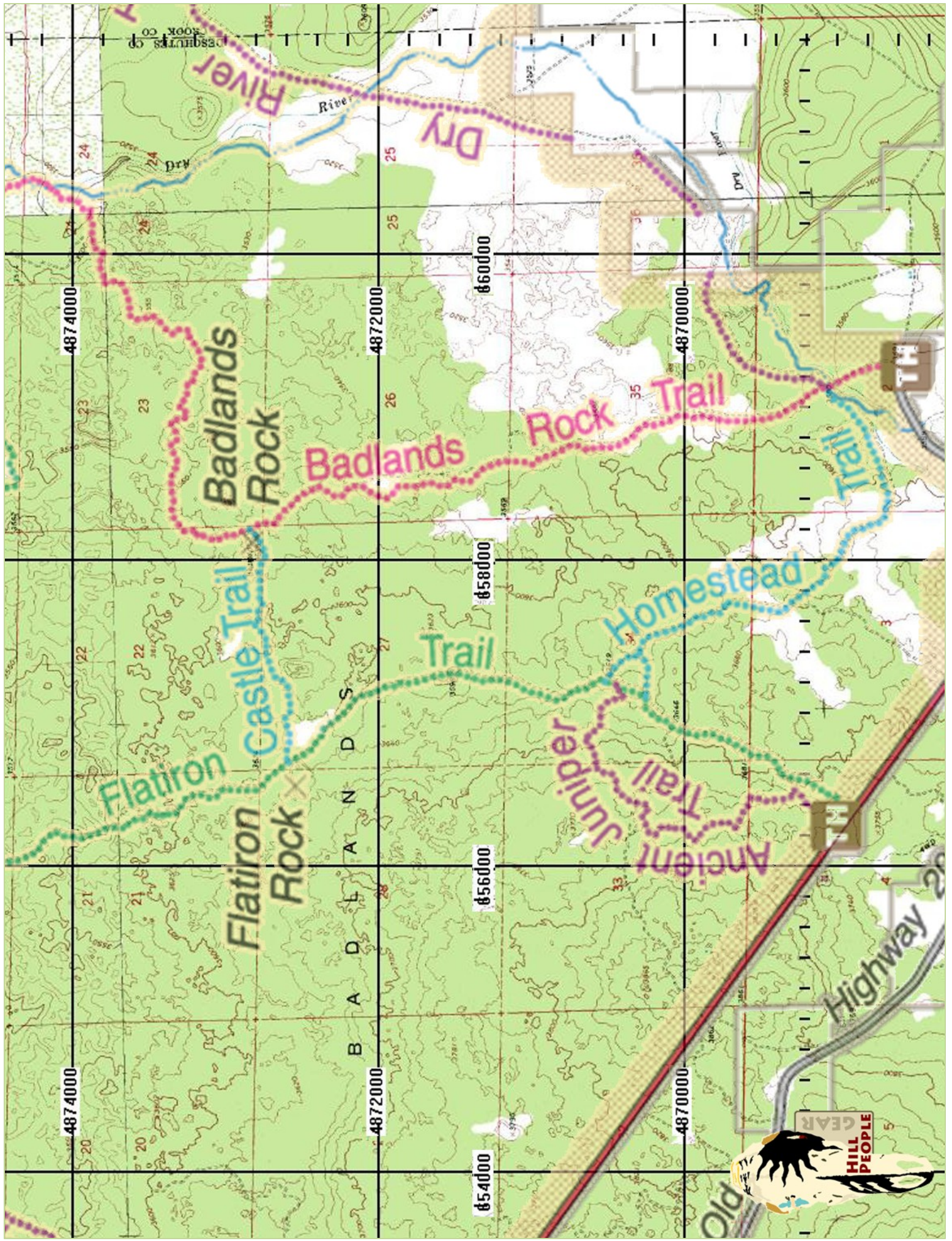
Flatiron Castle Trail

Flatiron Rock

Badlands Rock

Badlands Trail





4874000

4872000

4870000

4874000

4872000

4870000

854000

856000

858000

860000

Badlands  
Rock

Flatiron  
Castle Trail

Flatiron  
Rock

Badlands

Trail

Rock  
Trail

Juniper  
Trail

Homestead

Highway 26

HILL  
PEOPLE  
GEAR

